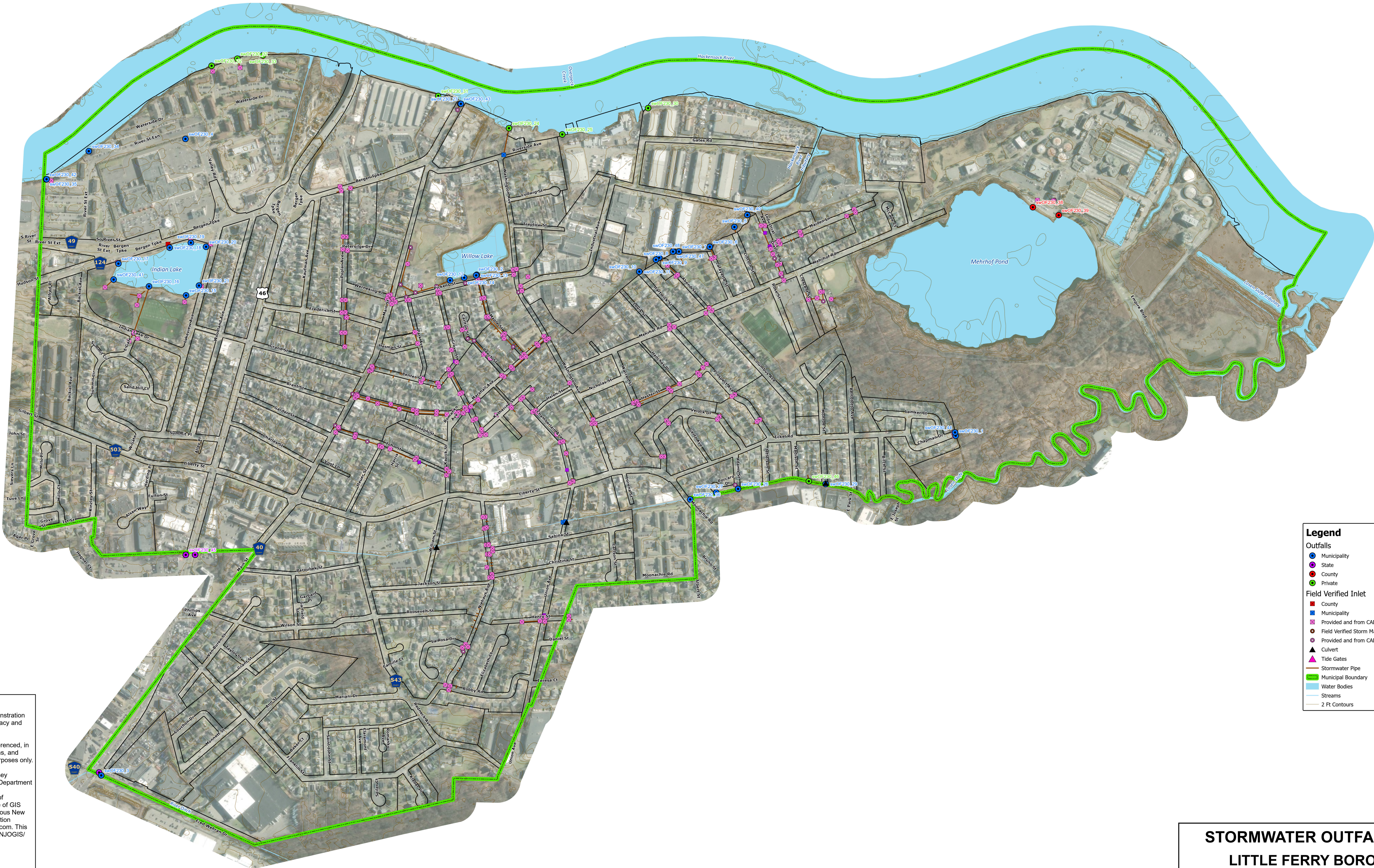
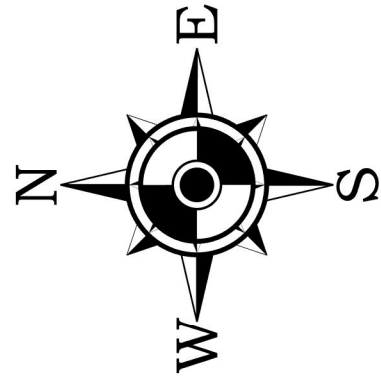


1	Update outfall locations	5/23/2024	NL	NP
No	REVISION	DATE	BY	CHK



General Notes & Data Sources:

This Geographic Information System (GIS) Map is for demonstration purposes only, any use of this product with respect to accuracy and precision shall be the sole responsibility of the end user.

The various storm water utilities shown on this map are referenced, in part, from ground surveys, aerial surveys and recorded plans, and documents, and are to be used for approximate location purposes only.

Additional GIS resource data was provided by the New Jersey Geographic Information Network (NJGIN), the New Jersey Department of Transportation (NJDOT), the New Jersey Department of Environmental Protection (NJDEP), the New Jersey Office of Information Technology (NJGIT), and the New Jersey Office of GIS (NJOGIS). The data was obtained and provided by the various New Jersey Departments at the New Jersey Geographic Information Network (NJGIN) <https://njgis-newjersey.opendata.arcgis.com>. This secondary product has not been verified by (NJGIN/NJGIT/NJOGIS/ NJDOT/NJDEP) and is not state-authorized.

All positions are based on the following:

- NAD 83 (horizontal datum)
- New Jersey State Plane Coordinate System
- English units (US Survey feet)

The geodetic accuracy and precision of the Geographic Information System (GIS) data contained in this mapping has not been developed nor verified by a professional licensed land surveyor and shall not be nor is intended to be used in matters requiring delineation and location of true ground horizontal and/or vertical controls, unless otherwise noted.

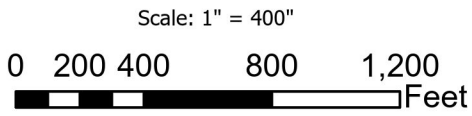
Legend

Outfalls

- Municipality
- State
- County
- Private

Field Verified Inlet

- County
- Municipality
- Provided and from CADD Catch Basins
- Field Verified Storm Manhole
- Provided and from CADD Storm Manhole
- ▲ Culvert
- ▲ Tide Gates
- Stormwater Pipe
- Municipal Boundary
- Water Bodies
- Streams
- 2 Ft Contours



STORMWATER OUTFALL MAP

LITTLE FERRY BOROUGH

BERGAN COUNTY NEW JERSEY

04/17/2024 Scale: 1" = 400"



REMINGTON & VERNICK ENGINEERS
2059 SPRINGDALE ROAD, CHERRY HILL, NJ 08003
(856) 795-9595, FAX (856) 795-1882, RVE.COM
Certificate of Authorization: 24 GA 28003300
Excellence • Innovation • Service